



# SAFE SCHOOLS

NEXT GENERATION SAFETY FOR THE NEXT GENERATION



# CREATING SAFE SCHOOLS

Our nation's schools are meant to be places for safe teaching and learning, free from crime and violence. A place where the next generation can grow and learn.

But this is only achievable with a foundation of safety. Everything starts with safety. It's the center that holds school operations together.

At Motorola Solutions, we've created the first and only end-to-end technology ecosystem that unifies voice, video, data and analytics in a single platform. Together this Safe Schools ecosystem provides you with the foundation of safety you need by addressing your unique challenges, from everyday incidents — a fight in a hallway, an allergic reaction on the playground or an injury in gym class — to extreme events, including active shooters and bomb threats.

We're also reimagining how the technologies used to help keep schools safe can do even more — drive efficiencies and generate better outcomes. Because safety, efficiency and productivity are deeply interconnected. With the right technologies, you can be faster, smarter, more focused and more resilient — better at everything you do.

When technologies communicate and learn from each other, safety and performance improves across your entire school. Intelligence advances outwards, giving you eyes and ears where you've never had them before. Information flows where it's needed — from cameras, to radios, to smart devices, to security operations centers — and what you need to know is made clear. People collaborate in more personalized and productive ways, using any network or device they want. Fairness and accuracy replace biases and blindspots. Resiliency increases and decisions improve.

Our Safe Schools technologies come together to efficiently keep students and staff secure, providing the certainty of safety you need. Bridging the gap in areas of risk, which often thrive in the unknown and the unseen. Helping you not only respond and manage both the everyday and the critical emergencies, but also recognize patterns, anticipate actions and help prevent situations from becoming major incidents. Reassuring everyone who comes through your doors that potential threats can be identified and resolved before they escalate. Ensuring that if the unthinkable happens, there are plans and technology in place to respond as quickly as possible.



## EXAMPLE USE CASE: PERIMETER BREACH

Our Safe Schools integrated ecosystem allows you to address everyday concerns as well as emerging situations through the four pillars — Detect, Analyze, Communicate and Respond. We will explore how these pillars work together to address your schools' challenges through the example of a Perimeter Breach.



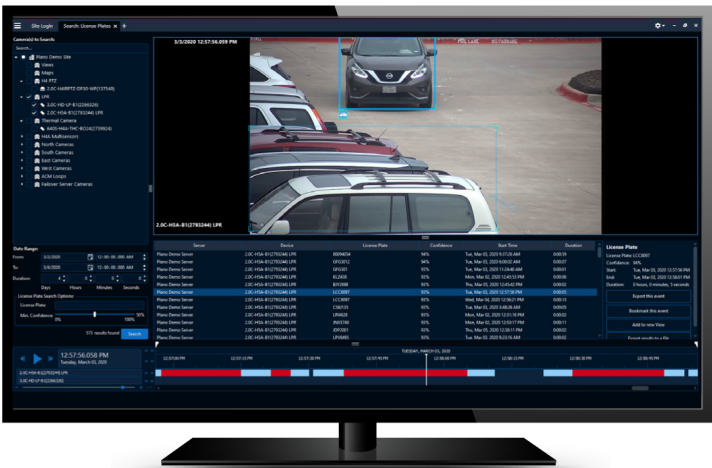


# DETECT

Managing your school grounds can be a challenge. From overseeing building entries, controlling student and visitor activity, and monitoring access, detection plays a critical role in minimizing potential threats.

Integrated video security monitors and identifies unusual activity and potential intruders across campus. Automatic license plate recognition analyzes vehicles entering and exiting campus — detecting and reporting suspicious vehicles on school property. Building entry management provides access control, automates lockdowns and pushes notifications of potential entry breaches to your School Resource Officers’ radios.

All of this comes together to improve your situational awareness and help increase early risk detection.



License Plate Recognition

## DETECTION SOLUTIONS

### TipSubmit

Ensure anonymous, confidential tip submissions using a web-based form, enabling students to “say something” at any time from their laptop or smartphone.

### Video Security

Capture critical details and enhance visibility across campus with specialized cameras for every location — such as fisheye for classrooms, multi-sensor for hallways, and pan-tilt-zoom for parking lots.

### License Plate Recognition

Set an outer perimeter, monitoring the main entrances and exits to your campus and automatically alerting security and law enforcement when threat-designated vehicles enter school grounds.

### Access Control

Manage staff, student and visitor access to buildings or restricted areas on school grounds using a role-based system with instant detection of individuals at access points.

### Watch List Alerting

Set an inner perimeter, identifying people of interest based on a secure, controlled watch list created and maintained by authorized users at the school.

### Radio Alert

Receive critical alerts directly on your radio with sensor and camera analytics that connect seamlessly with your system, monitor activity and provide for a more focused response.

## PERIMETER BREACH - DETECT



### License Plate Recognized

Disgruntled ex-employee license plate detected entering school grounds.



# ANALYZE

Every day, you're responsible for monitoring a large campus to maintain the safety of hundreds of students. Scouring through the collected data in order to recognize concerning behaviors on and around campus is a demanding task.

Video analytics detect potentially suspicious activity on school property, providing real-time insights into campus movements. Appearance searches quickly and seamlessly explore video footage and locate students and visitors through physical descriptions, allowing easy identification. Unusual motion detection reveals atypical events which need investigating.

Ultimately, these insights enable proactive monitoring and management across campus — enabling you to respond to suspicious behavior before an incident occurs.



Appearance Search

## ANALYTIC SOLUTIONS

### Avigilon Appearance Search™

Find who you are looking for faster with searches using specific physical descriptions such as clothing color, gender or age.

### Identity Search

Map personnel movements on-site with video feeds intelligently integrated with ID badge and credential activity tracking in order to visually retrace campus movements.

### Unusual Motion & Activity Detection

Reveal atypical events with artificial intelligence that “learns” typical activities and flags unusual motion or activity — turn unknowns into insights.

### Focus of Attention

Easily identify where action is required with potentially critical video activities identified by color-coded hexagons so you can focus your attention on what's important.

### Self-Learning Video Analytics

Monitor school properties 24/7 with video software that detects abnormal or concerning activity to enable immediate response.

## PERIMETER BREACH - ANALYZE



### Appearance Detected

Face match video analytics locates offender on school property and alerts security officers.



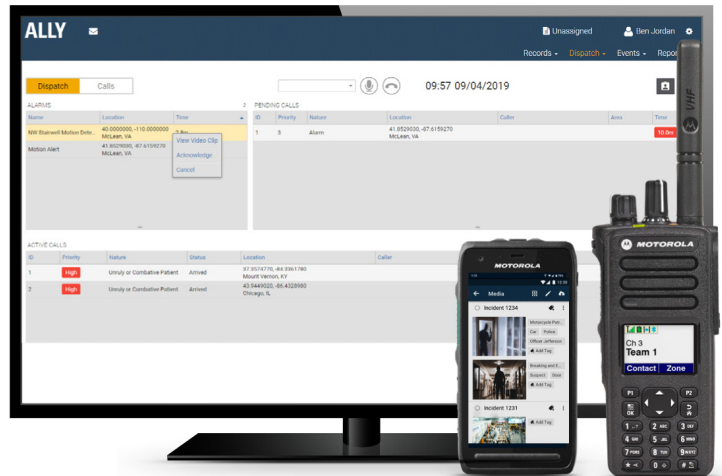


# COMMUNICATE

Whether it's a routine fire drill, a sudden food fight in the cafeteria or an emergency situation, clear and timely communication is key to creating a connected and protected campus.

Communications — including radios and LTE devices — instantly and reliably connect your security, administration, bus drivers and staff. Radio alerts ensure key personnel are informed of critical alerts. Mass notification enables you to send critical information to faculty, staff, parents and guardians quickly and easily, keeping the community aware of campus activity.

Connectivity — both on and off campus — is an important part of creating a safe and collaborative educational environment where you and your team are always aware.



Ally Dispatch

## COMMUNICATION SOLUTIONS

### Two-Way Radio Communication

Ensure your team can hear and be heard across campus with superior voice clarity, long battery life and outstanding range.

### WAVE Broadband Push-to-X

Communicate instantly regardless of device, network or geographic boundaries with extended connectivity and reach that enables sharing to smartphones, tablets, laptops and even land-lines — enhancing situational awareness.

### NITRO (CBRS)

Ensure every student can access online learning programs from the safety of their own homes and share multimedia and data across your facilities using a private data network with Nitro, the Motorola Solutions private LTE solution.

### Dispatch Software

Simplify and standardize your dispatch process and workflow with a dashboard view of assigned or pending calls, and available units. Keep your team in touch across different devices, networks and locations, sending private or group calls to all users across all devices.

## PERIMETER BREACH - COMMUNICATE



### Notification Communicated

Alert dispatched to staff across radios and smartphones to lock-down school.



# RESPOND

Whether it's an everyday situation or an emergency, being ready and aware can make a critical difference. Having a comprehensive communications and action plan that can be seamlessly activated ensures your personnel are able to respond calmly and effectively with minimal disruptions to the learning environment.

Emergency connectivity ensures instant access to your local law enforcement agency for immediate notification and effective engagement of emergency response teams. Mission-critical devices provide interoperability and seamless communications when you need it most. Real-time intelligence shares alerts and live video feeds with campus personnel and public safety, enabling a coordinated and informed response and providing eyes on the scene for your security staff and local first responders.

Because enabling rapid response and documenting past incidents can be the key to preventing incidents from becoming tragedies.



CommandCentral Aware Enterprise

## RESPONSE SOLUTIONS

### CommandCentral Aware Enterprise

Provide incident insights with real-time video and direct connections between your school and local law enforcement, giving police eyes on the scene in seconds for a more informed response.

### Communicator: Mass Notification

Notify and mobilize critical personnel, faculty or parents at a moment's notice with automated alerts sent by text, email or voice message from laptops or smartphones, ensuring easy information sharing across groups.

### P25 Mission-Critical Communications

Enable seamless coordination and connectivity — regardless of the situation — with interoperability between school personnel and local law enforcement to ensure a rapid response.

### Dynamic Interoperability

Establish real-time coordination and dynamic, seamless, secure communication with connectivity between two-way radios and smartphones whenever and wherever it is needed.

### Ally Incident Management & Records

Enhance incident and records management with customizable record fields and multimedia attachments, all accessible from web-enabled devices, promoting proactive trend analysis and security planning.

### Emergency Response Access Control

Empower an immediate first response with full access to rule-based actions and notifications from any workstation, ensuring management of all ingress and egress points anytime, anywhere.

## PERIMETER BREACH - RESPOND

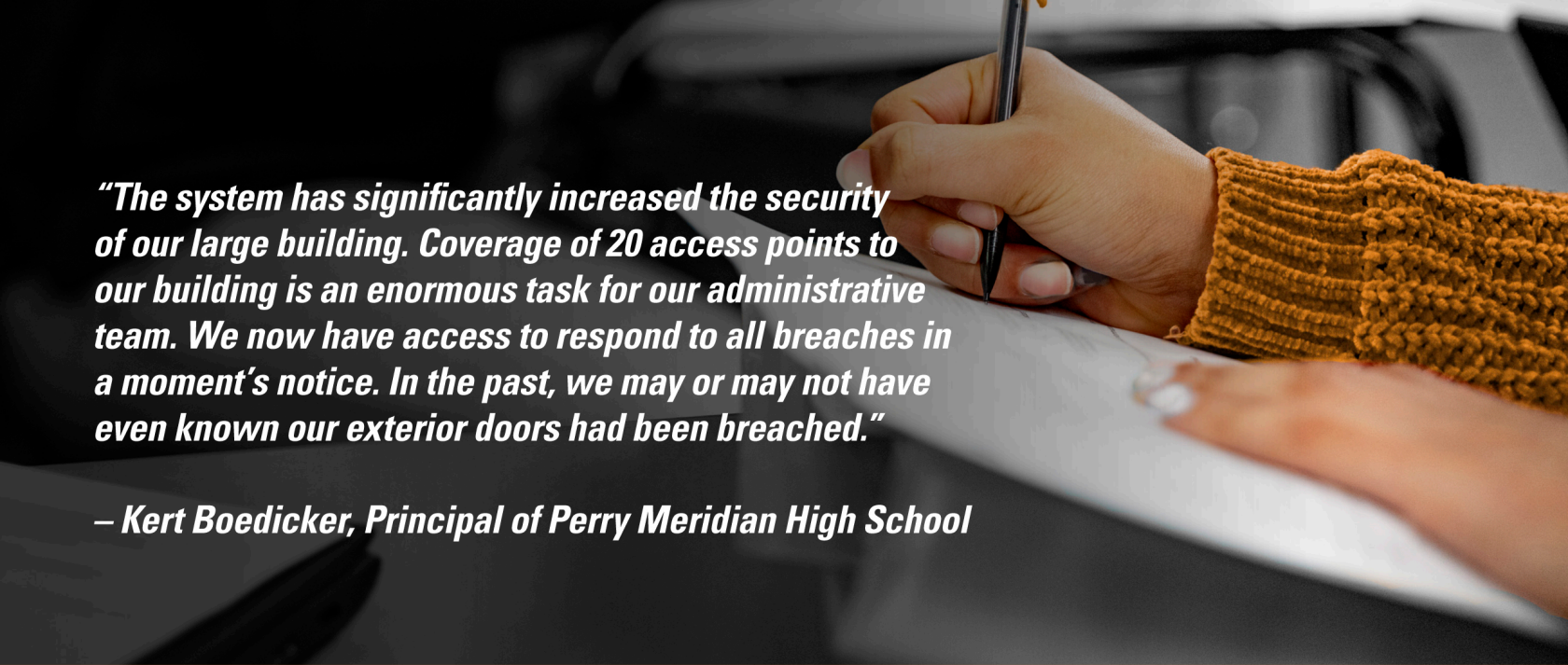


### First Response Dispatched

Local police directly informed with video for immediate first response.







***“The system has significantly increased the security of our large building. Coverage of 20 access points to our building is an enormous task for our administrative team. We now have access to respond to all breaches in a moment’s notice. In the past, we may or may not have even known our exterior doors had been breached.”***

***– Kert Boedicker, Principal of Perry Meridian High School***

## SERVICES

Effectively managing a complex ecosystem can be complicated. You need the right service, support and management to ensure your day-to-day needs are taken care of — ensuring smooth operations. Motorola Solutions’ unique service offerings provide technical support, hardware repair and replacement, and software updates to ensure your two-way radio, infrastructure, cameras and software are always working at peak performance.

### Technical Support

Effectively troubleshoot and promptly resolve technical and non-technical issues with dedicated experts.

### Repair and Replacement

Protect system components from normal wear and tear and keep them in operation with state-of-the-art diagnostics equipment, repair tools and replacement parts.

### Software Updates

Ensure continuous security, extended performance and enhanced functionality of two-way radios, infrastructure and cameras with certified and pre-tested software updates.

**92%**

of educators report that creating a safe, secure environment is a priority.<sup>1</sup>



## MOTOROLA SOLUTIONS GRANT ASSISTANCE PROGRAM

In order to provide schools and other educational organizations with a comprehensive resource for grant information and assistance, Motorola Solutions has partnered with EducationGrantsHelp to provide:

- Free grant research and automatic weekly alerts
- Free grant consulting from senior grant education experts
- Free grant application and narrative help
- Discounted complete grant writing services

To access these grant assistance services, visit:

[educationgrantshelp.com/motorola-edugh-grant-assistance](https://educationgrantshelp.com/motorola-edugh-grant-assistance)

## TAKE SCHOOL SAFETY TO THE NEXT LEVEL

It's time to reimagine what safety can do — driving efficiencies, bolstering performance and helping you deliver a secure and supportive school environment for children to learn.

By bringing together the technologies and solutions you need to detect, analyze, communicate and respond, Motorola Solutions' Safe Schools integrated technology ecosystem is helping you build a safer school. o you can attract families to communities where students can thrive. And where you can recruit the best teachers and faculty who can focus on educating the next generation.

Sources:

1 <https://www.motorolasolutions.com/content/dam/msi/docs/solutions/education/k-12-education/2017-education-survey-ebook.pdf>

Learn more at:

[motorolasolutions.com/education](https://motorolasolutions.com/education)

MOTOROLA, MOTO, MOTOROLA SOLUTIONS and the Stylized M Logo are trademarks or registered trademarks of Motorola Trademark Holdings, LLC and are used under license. All other trademarks are the property of their respective owners.



Continental Wireless, INC.  
10455 Vista Park Rd  
Dallas, Texas 75238  
[cntlwire.com](http://cntlwire.com)  
[jason.hartline@cntlwire.com](mailto:jason.hartline@cntlwire.com)